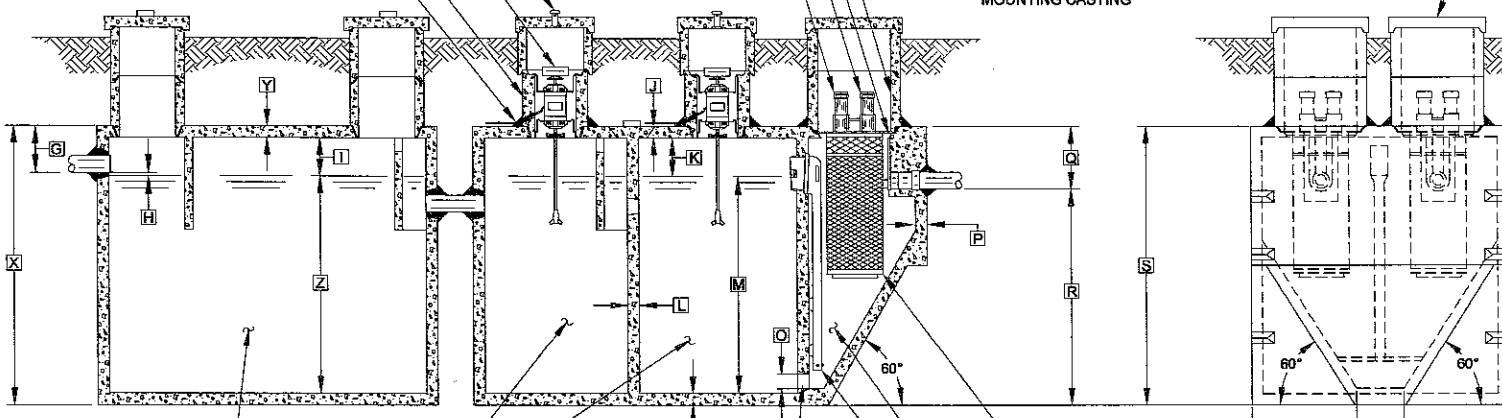


PLAN VIEW

4" DIAMETER INLET LINE  
ALTERNATE INLET LOCATION  
GROUT OR SYNTHETIC SEAL  
REMOVABLE INSPECTION COVER WITH CAST-IN-PLACE HANDLE  
AERATOR MOUNTING CASTING AND COVER WITH FRESH AIR VENT ASSEMBLY  
CAST-IN-PLACE RECEIVING FLANGE  
BIO-KINETIC® SYSTEM LOCKING LUGS  
4" DIAMETER EFFLUENT LINE  
GASKETED DISCHARGE FLANGE ASSEMBLY  
BIO-KINETIC® SYSTEM MOUNTING CASTING  
FINAL CLARIFICATION CHAMBER  
ADAPTER PLATE  
SINGULAIR® TANK OUTLET COUPLING TO 4" DIAMETER EFFLUENT LINE

ALTERNATE INLET LOCATION  
PRETREATMENT CHAMBER  
EXTENDED AERATION CHAMBER  
SINGULAIR® AERATOR (SEE NOTE 1)  
AERATOR MOUNTING CASTING  
UNDERGROUND POWER SUPPLY ENTRANCE (SEE AERATOR MOUNTING AND INSTALLATION DETAIL DRAWING)



SECTION A-A

NOTE: PRETREATMENT CHAMBER MINIMUM REQUIREMENTS SHALL BE: 1,000 GALLONS CAPACITY, 15 GALLONS PER INCH OF LIQUID LEVEL AND 12 INCHES OF FREEBOARD.

CAST-IN-PLACE AERATION CHAMBER TRANSFER PORT

NOTE: SOME CRITICAL DIMENSIONS ARE INTENTIONALLY LEFT BLANK TO BE FILLED IN PER INDIVIDUAL JOB SITE SPECIFICATIONS.

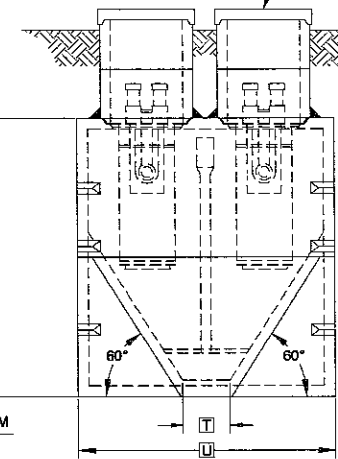
NOTE: TOTAL SYSTEM CAPACITY: 2,300 GALLONS RATED CAPACITY: 1,000 GALLONS PER DAY

**GENERAL NOTES:**

- ① SINGULAIR® AERATOR, AS TESTED AND ACCEPTED BY NSF.
- ② FALL THROUGH SINGULAIR® PLANT FROM INLET INVERT TO OUTLET INVERT IS FOUR INCHES. INLET INVERT IS TWELVE INCHES BELOW TANK TOP.
- ③ ON DEEPER INSTALLATIONS, PRECAST RISERS MUST BE USED TO EXTEND AERATOR MOUNTING CASTING AND BIO-KINETIC® SYSTEM MOUNTING CASTING TO GRADE. INSPECTION COVER ON PRETREATMENT CHAMBER MUST BE DEVELOPED TO WITHIN TWELVE INCHES OF GRADE.
- ④ TANK REINFORCED PER ACI STD. 318-99.
- ⑤ REMOVABLE COVERS ON RISERS WEIGH IN EXCESS OF SEVENTY-FIVE POUNDS EACH TO PREVENT UNAUTHORIZED ACCESS.
- ⑥ CONTACT THE LOCAL, LICENSED SINGULAIR® DISTRIBUTOR FOR ELECTRICAL REQUIREMENTS.

BIO-KINETIC® SYSTEM DISCHARGE DETAIL

BIO-KINETIC® SYSTEM MOUNTING CASTING AND COVER



OUTLET END VIEW

PROJECT ENGINEER'S APPROVAL:  
I (WE) HEREBY CERTIFY THAT THIS DRAWING HAS BEEN CHECKED AND IS APPROVED FOR USE IN CONFORMITY WITH THE CONTRACT DOCUMENTS.

DATE: \_\_\_\_\_

NAME: \_\_\_\_\_

CONTRACTOR'S CERTIFICATION:  
I (WE) HEREBY CERTIFY THAT THIS DRAWING HAS BEEN CHECKED AND IS APPROVED FOR USE IN CONFORMITY WITH THE CONTRACT DOCUMENTS.

DATE: \_\_\_\_\_

NAME: \_\_\_\_\_

**CRITICAL DIMENSIONS**

A	1'-0"	N	0'-3"
B	2'-9"	O	0'-6"
C	2'-8"	P	0'-2½"
D	3'-7"	Q	1'-4"
E	2'-3"	R	4'-8"
F	9'-3"	S	6'-0"
G	1'-0"	T	1'-0"
H	0'-3"	U	5'-6"
I	1'-0"	V	
J	0'-3"	W	
K	1'-0"	X	
L	0'-2"	Y	
M	4'-6"	Z	

U.S. AND FOREIGN PATENTS PENDING



SINGULAIR® BIO-KINETIC® WASTEWATER TREATMENT SYSTEM MODEL 960-1000 GPD

DESIGN	DATE	BY	APP'D
PC-5	1-9-96	JMM	B
		GJS	
		NTS	